



BarraCuda Fast SSD

User Manual



Click here to access an up-to-date online version of this document. You will also find the most recent content as well as expandable illustrations, easier navigation, and search capability.

Contents

1	Introduction	4
	Box content	4
	Minimum system requirements	4
	• Ports	4
	• Operating system	4
	• Minimum free disk space	4
2	Getting Started	5
	Connect the USB cable	5
	Set up Seagate BarraCuda Fast SSD	5
	• Start here	6
	• Register your device	6
	• Download Toolkit	7
	• Install Toolkit	7
	Storage format	8
	Disconnecting the drive	8
3	Use Toolkit to Set Up Sync Plans	10
	Create a Sync Plus plan	10
4	Optional Formatting and Partitioning	11
	About file system formats	11
	• How to choose the file system format	11
	Manual formatting	12
	• Mac	12
	• macOS version 10.11 and later	12
	• Windows	12
5	Safely Remove Seagate BarraCuda Fast SSD From Your Computer	14
	Windows	14
	Mac	14
	• Eject via Finder window	14
	• Eject via Desktop	15
6	Frequently Asked Questions	16
	All users	16
	• Problem: My file transfers are too slow	16
	• Problem: The provided USB cable is too short	16

- Problem: I'm receiving file transfer error messages 16
- Windows** 17
- Problem: The device icon doesn't appear in Computer 17
- Mac** 17
- Problem: The device icon does not appear on my desktop 17

7 Regulatory Compliance 19

- China RoHS 2 19
- Taiwan RoHS 19

Introduction

For common questions and answers about your hard drive, see [Frequently Asked Questions](#) or visit [Seagate customer support](#).

Box content

- Seagate BarraCuda Fast SSD
- USB-C (USB 3.1 Gen 2) cable
- USB-C (USB 3.1 Gen 1) to USB-A cable (compatible with USB 3.0/USB 2.0 ports)



Important—Save your packaging. If you experience problems with your hard drive and want to exchange it, the hard drive must be returned in its original packaging.

Minimum system requirements

Ports

Your Seagate device has a USB-C (USB 3.1 Gen 2) interface and can be connected to a computer with a USB-C, Thunderbolt 3, or USB-A (USB 3.0 or USB 2.0) port.

Operating system

- Windows® 7 or higher
- macOS® 10.12 or higher

Minimum free disk space

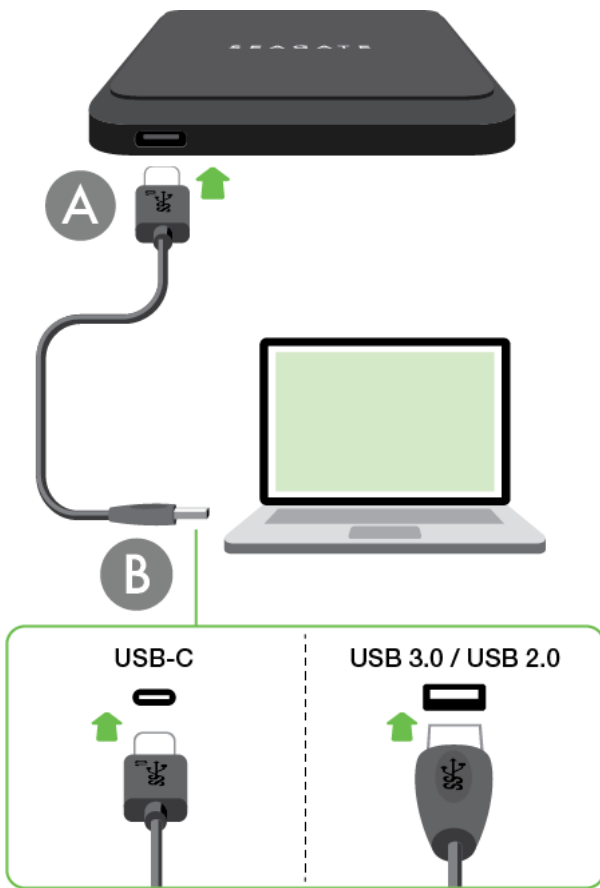
- 600MB recommended

Getting Started

1 Connect the USB cable

Confirm the type of USB port on your computer, then choose the appropriate cable to connect your device.

Use the USB-C to USB-C cable if your computer has a USB-C port. If your computer does not have a USB-C port, use the USB-C to USB-A cable.




2 Set up Seagate BarraCuda Fast SSD

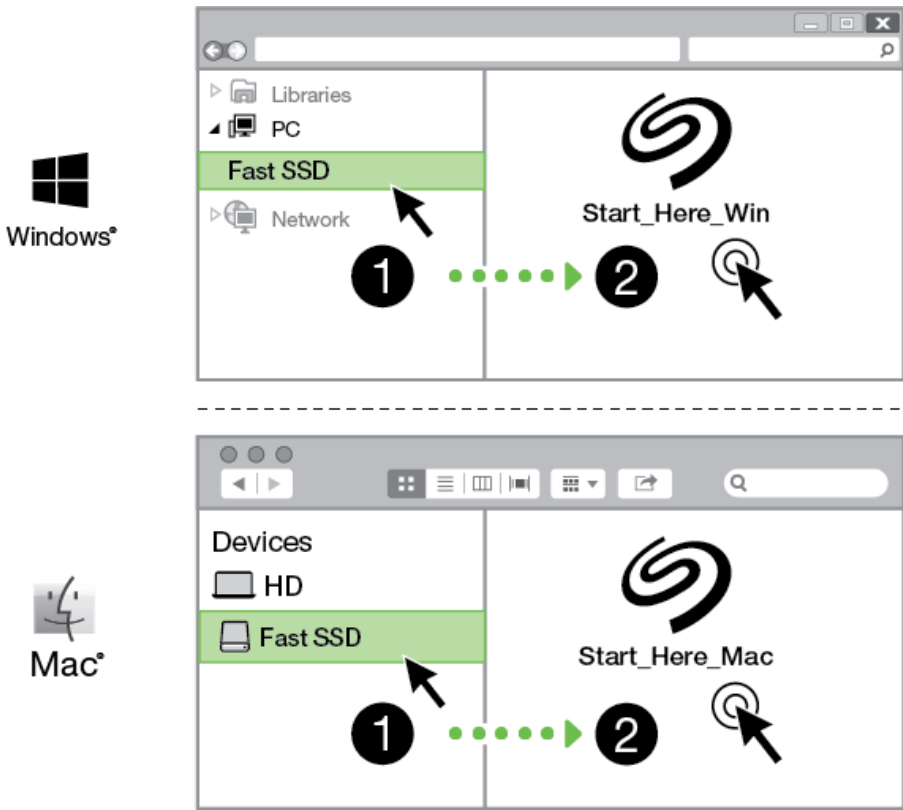
The setup process lets you:

Register your Seagate BarraCuda Fast SSD

Get the most from your drive with easy access to information and support.

 Your computer must be connected to the internet to register your device and install Toolkit.

A Start here



Using a file manager such as Finder or File Explorer, open BarraCuda Fast SSD and launch [Start Here Win](#) or [Start Here Mac](#).

B Register your device

Register

I have read and agree to...

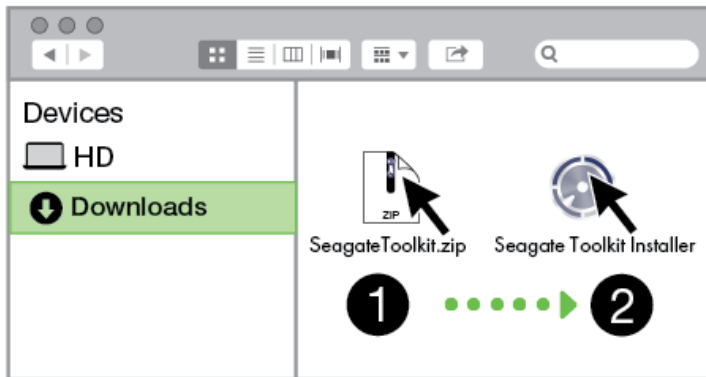
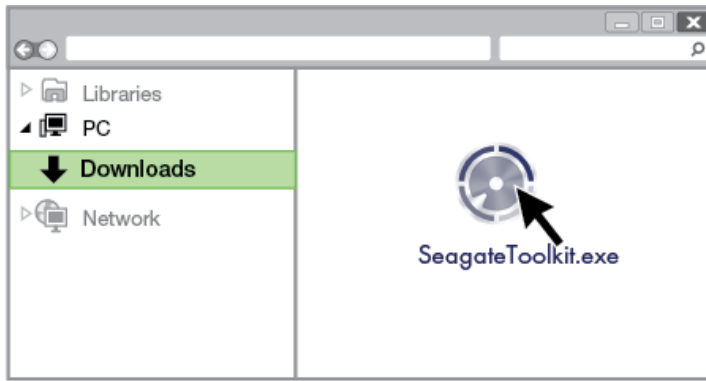
- Terms and Conditions
- Privacy Statement
- Optional Offers

Enter your information and click [Register](#).

C Download Toolkit

Click the [Download](#) button.

D Install Toolkit



Using a file manager such as Finder or File Explorer, go to the folder where you receive downloads.



Click on the [SeagateToolkit.exe](#) file to launch the application.



Open the [SeagateToolkit.zip](#) file. Click on the [Seagate Toolkit Installer](#) to launch the application.



Your computer must be connected to the internet to install and run Toolkit.

Storage format

Seagate BarraCuda Fast SSD is preformatted exFAT for compatibility with both Windows and Mac computers. If you use the drive with only one type of computer, you can optimize file copy performance by formatting it in the native file system for your operating system. See [Optional Formatting and Partitioning](#) for details.

Disconnecting the drive

In order to avoid file system corruption, it's important to unmount Seagate BarraCuda Fast SSD's volumes

before disconnecting the interface cable. See [Safely Remove Seagate BarraCuda Fast SSD From Your Computer](#) for details.

Use Toolkit to Set Up Sync Plans

Create a Sync Plus plan

Sync Plus creates a synced folder on your Seagate BarraCuda Fast SSD that mirrors folders on your PC or Mac, so your files are available in both places. Deleted files can be automatically stored in an archive folder on BarraCuda Fast SSD in case you need them.

- [Click here](#) for details on setting up Sync Plus.

Optional Formatting and Partitioning

Seagate BarraCuda Fast SSD is preformatted exFAT for compatibility with both Mac and Windows computers. If you use the drive with only one type of computer, you can optimize file copy performance by formatting the drive in the native file system for your operating system.

About file system formats

NTFS—The native file system for Windows. macOS can read NTFS volumes but cannot natively write to them.

Mac OS Extended (HFS+)—An Apple file system optimized for macOS 10.12 and earlier. This file system remains the best option for external storage devices and is the only format compatible with Time Machine. Windows cannot natively read or write to HFS+ (journaled) volumes.

APFS (Apple File System)—An Apple file system optimized for solid state drives (SSDs) and flash-based storage systems. While APFS may benefit SSD performance, note the following restrictions:

- You cannot use an APFS-formatted disk as your Time Machine backup drive. Format Seagate BarraCuda Fast SSD to HFS+ if you intend to use it with Time Machine.
- APFS is only supported on macOS 10.13 or later.

exFAT—Compatible with macOS and Windows. exFAT is not a journaled file system which means it can be more susceptible to data corruption when errors occur or the drive is not disconnected properly from the computer.

How to choose the file system format

Use NTFS if:

...you connect the storage device to Windows computers, and you don't need to allow a Mac to write to the storage device.

Use HFS+ if:

...you connect the storage device to Mac computers, and you don't need to allow a Windows computer to read or write to the disk. HFS+ is the only format compatible with Time Machine.

Use APFS if:

...you connect the storage device to Mac computers, and you don't need to allow a Windows computer to read or write to the drive. Do not use APFS if you intend to use Seagate BarraCuda Fast SSD with Time Machine, or if your computer is not running macOS 10.13 or later.

Use exFAT if:

...you need to allow both Mac and Windows computers to read and write to the storage device.

Manual formatting

Use the steps below to manually format and partition a storage device.

! **Formatting erases everything on the storage device.** Seagate highly recommends that you **back up all data** on your storage device before performing the steps below. Seagate is not responsible for any data lost due to formatting, partitioning, or using a Seagate storage device.

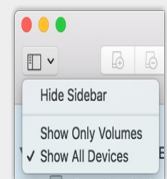
Mac

macOS version 10.11 and later

1. Open the Finder and go to [Applications > Utilities > Disk Utility](#).
2. In the sidebar to the left, select your Seagate BarraCuda Fast SSD.



macOS starting version 10.13—Make sure to select the storage device and not just the volume. If you don't see two entries listed in the sidebar, change the view in disk utility to show both the drive and the volume. The view button is in the upper left side of the Disk Utility window. Change the view to Show All Devices. This feature was introduced in macOS 10.13 and is not available in 10.11 or 10.12.



3. Select [Erase](#).
4. A dialog box opens. Enter a name for the drive. This will be the name displayed when the drive mounts.
5. For Format, select [OS X Extended \(Journaled\)](#).
6. For Scheme, select [GUID Partition Map](#).
7. Click [Erase](#).
8. Disk Utility formats the drive. When it's finished, click [Done](#).

Windows

1. Make sure the storage device is connected to and mounted on the computer.
2. Go to Search and then type Disk Management. In the search results, double-click [Disk Management](#).

3. From the list of storage devices in the middle of the Disk Management window, locate your Seagate device.
4. The partition must be available to format. If it is currently formatted, right click on the partition and then choose [Delete](#).
5. To create a new partition, right click on the volume and select [New Simple Volume](#). Follow the on-screen instructions when the New Simple Volume Wizard appears.

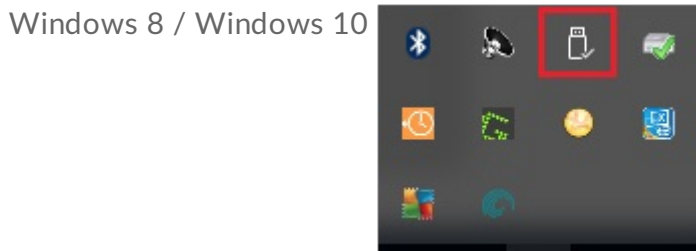
Safely Remove Seagate BarraCuda Fast SSD From Your Computer

Always eject a storage device from your computer before physically disconnecting it. Your computer must perform filing and housekeeping operations on the drive before it is removed. Therefore, if you unplug the drive without using the operating system's software, your files can become corrupt or damaged.

Windows

Use the Safely Remove tool to eject a storage device.

1. Click the Safely Remove icon in your Windows System Tray to view the devices you can eject.



2. If you don't see the Safely Remove Hardware icon, click the Show hidden icons arrow in the system tray to display all icons in the notification area.
3. In the list of devices, choose the storage device you want to eject. Windows displays a notification when it is safe to remove the device.
4. Disconnect the storage device from the computer.

Mac

There are several ways you can eject your storage device from a Mac. See below for two options.

Eject via Finder window

1. Open a Finder window.
2. On the sidebar, go to Devices and locate the storage device you want to eject. Click the eject symbol to

the right of the storage device name.

3. Once the storage device disappears from the sidebar or, the Finder window closes, you can disconnect the interface cable from your Mac.

Eject via Desktop

1. Select the desktop icon for your storage device and drag it to the Trash.
2. When the storage device icon is no longer visible on your desktop, you can physically disconnect it from your Mac.

Frequently Asked Questions

For help setting up and using Seagate BarraCuda Fast SSD, review the frequently asked questions below. For additional support resources, go to [Seagate customer support](#).

All users

Problem: My file transfers are too slow

Q: Are both ends of the USB cable firmly attached?

A: Review troubleshooting tips for cable connections below:

- Check both ends of the cable and make sure that they are fully seated in their respective ports.
- Try disconnecting the cable, waiting 10 seconds, and then reconnecting it.
- Try a different USB cable.

Q: Are there other devices connected to the same port or hub?

A: Disconnect other devices and see if the storage device's performance improves.

Problem: The provided USB cable is too short

Q: Can I use my storage device with a longer cable?

A: Yes, provided it is certified according to USB standards. However, Seagate recommends using the cable shipped with your storage device for the best results. If you use a longer cable and experience problems with detection, transfer rates or disconnection, use the original cable included with your storage device.

Problem: I'm receiving file transfer error messages

Q: Did you get an error message telling you that the drive has been disconnected when coming out of sleep mode?

A: Ignore this message since the drive remounts on the desktop despite the pop-up.

Windows

Problem: The device icon doesn't appear in Computer

Q: Is the storage device listed in Device Manager?

A: All storage devices appear in at least one place in Device Manager.

Type `Device Manager` in Search to launch it. Look in the Disk Drives section and, if necessary, click the Plus (+) icon to view the full list of devices. If you're uncertain that your storage device is listed, safely unplug it and then reconnect it. The entry that changes is your Seagate device.

Q: Is your device listed next to an unusual icon?

A: Windows Device Manager usually provides information about failures with peripherals. While the Device Manager can assist with troubleshooting most problems, it may not display the exact cause or provide a precise solution.

An unusual icon next to the device can reveal a problem. For example, instead of the normal icon based on the type of device, it has an exclamation point, question mark or an X. Right click this icon and then choose Properties. The General tab provides a potential reason why the device is not working as expected.

Mac

Problem: The device icon does not appear on my desktop

Q: Is your Finder configured to hide external disks on the desktop?

A: Go to Finder and then check **Preferences | General tab | Show these items on the desktop**. Confirm that **External Disks** is selected.

Q: Is your device mounting in the operating system?

A: Open **Disk Utility at Go | Utilities | Disk Utility**. If the device is listed in the left-hand column, check your Finder preferences to see why it is not displayed on the desktop (review the question above).

Q: Does your computer's configuration meet the minimum system requirements for use with this storage device?

A: Refer to the product packaging for the list of supported operating systems.

Q: Did you follow the correct installation steps for your operating system?

A: Review the installation steps in [Getting Started](#).

Regulatory Compliance

Product Name Seagate BarraCuda Fast SSD

Regulatory Model Number SRD0FV2

China RoHS 2



China RoHS 2 refers to the Ministry of Industry and Information Technology Order No. 32, effective July 1, 2016, titled Management Methods for the Restriction of the Use of Hazardous Substances in Electrical and Electronic Products. To comply with China RoHS 2, we determined this product's Environmental Protection Use Period (EPUP) to be 20 years in accordance with the Marking for the Restricted Use of Hazardous Substances in Electronic and Electrical Products, SJT 11364-2014.

中国 RoHS 2 是指 2016 年 7 月 1 日起施行的工业和信息化部令第 32 号“电力电子产品限制使用有害物质管理办法”。为了符合中国 RoHS 2 的要求，我们根据“电子电气产品有害物质限制使用标识”(SJT 11364-2014) 确定本产品的环保使用期 (EPUP) 为 20 年。

部件名称 Part Name	有害物质 Hazardous Substances					
	铅 (Pb)	汞 (Hg)	镉 (Cd)	六价铬 (Cr ⁶⁺)	多溴联苯 (PBB)	多溴二苯醚 (PBDE)
固态驱动器 SSD	X	O	O	O	O	O
外接硬盘印刷电路板 Bridge PCBA	X	O	O	O	O	O
电源 (如果提供) Power Supply (if provided)	X	O	O	O	O	O
接口电缆 (如果提供) Interface cable (if provided)	X	O	O	O	O	O
其他外壳组件 Other enclosure components	O	O	O	O	O	O

本表格依据 SJ/T 11364 的规定编制。
This table is prepared in accordance with the provisions of SJ/T 11364-2014.

O: 表示该有害物质在该部件所有均质材料中的含量均在 GB/T 26572 规定的限量要求以下。
O: Indicates that the hazardous substance contained in all of the homogeneous materials for this part is below the limit requirement of GB/T26572.

X: 表示该有害物质至少在该部件的某一均质材料中的含量超出 GB/T 26572 规定的限量要求。
X: Indicates that the hazardous substance contained in at least one of the homogeneous materials used for this part is above the limit requirement of GB/T26572.

Taiwan RoHS

Taiwan RoHS refers to the Taiwan Bureau of Standards, Metrology and Inspection's (BSMI's) requirements in standard CNS 15663, Guidance to reduction of the restricted chemical substances in electrical and electronic equipment. Beginning on January 1, 2018, Seagate products must comply with the "Marking of presence" requirements in Section 5 of CNS 15663. This product is Taiwan RoHS compliant. The following table meets the Section 5 "Marking of presence" requirements.

台灣RoHS是指台灣標準局計量檢驗局(BSMI)對標準CNS15663要求的減排電子電氣設備限用化學物質指引。從2018年1月1日起, Seagate 產品必須符合CNS15663第5節「含有標示」要求。本產品符合台灣RoHS。下表符合第5節「含有標示」要求。

產品名稱：外接式固態硬碟，型號：SRD0FV2		Product Name: Seagate BarraCuda Fast SSD, Model: SRD0FV2				
單元 Unit	限用物質及其化學符號 Restricted Substance and its chemical symbol					
	鉛 (Pb)	汞 (Hg)	鎘 (Cd)	六價鉻 (Cr ⁶⁺)	多溴聯苯 (PBB)	多溴二苯醚 (PBDE)
固態驅動器 SSD	—	0	0	0	0	0
外接硬盤印刷電路板 Bridge PCBA	—	0	0	0	0	0
電源 (如果提供) Power Supply (if provided)	—	0	0	0	0	0
傳輸線材 (如果提供) Interface cable (if provided)	—	0	0	0	0	0
其他外觀組件 Other enclosure components	0	0	0	0	0	0
備考 1. "0" 係指該項限用物質之百分比含量未超出百分比含量基準值。 Note 1. "0" indicates that the percentage content of the restricted substance does not exceed the percentage of reference value of presence.						
備考 2. "—" 係指該項限用物質為排除項目。 Note 2. "—" indicates that the restricted substance corresponds to the exemption.						